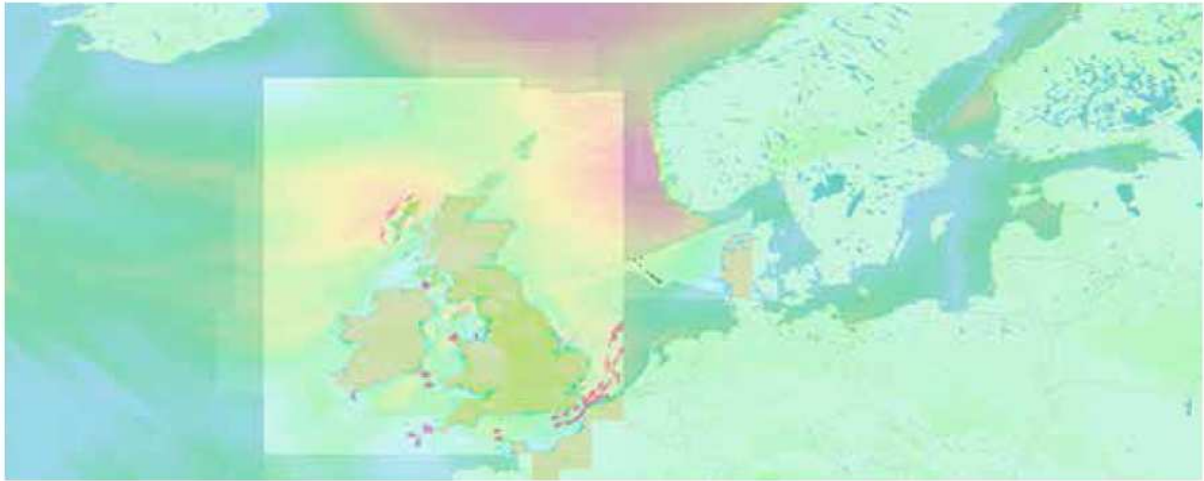


High Resolution Weather Overlay

NAVIGATOR+



With Chart Track Navigator+, you get a full weather service for all your needs in high quality data delivered by the Danish Meteorological Institute (DMI), including information regarding tropical storm and ice conditions. Within the package you will get worldwide access to following weather and ocean parameters:

- Wind (direction and speed)
- Mean Sea Level Pressure
- Significant wave height
- Sea (height, direction and period)
- Swell (height, direction and period)

The ocean and weather parameters from the Global Atmospheric EC MWF model and the Ocean Wave model "WAM HRE S" include:

- Delivery in 12-hour time steps
- Updates twice a day
- Forecast running 168 hours ahead (7 days forecast)
- 0.25x0.25 degrees resolution for the atmospheric and oceanic parameters

Current data from the Global Ocean current model "UK FOAM" consist of:

- Current speed and direction
- Delivery in 12-hour steps
- Updates twice a day
- 144 hours ahead (6 days forecast)
- 0.25x0.25 degrees resolution

ABOUT THE DANISH METEOROLOGICAL INSTITUTE (DMI)



The Danish
Meteorological
Institute

DMI provides meteorological services in the Danish commonwealth, which consists of Denmark, the Faroe Islands, and Greenland, as well as surrounding waters and airspace. Meteorological services include forecasting and warnings and monitoring of weather, climate and related environmental conditions in the atmosphere, on land and at sea.

DMI has a long and proven track record when it comes to weather routeing. DMI's aim is to secure the safest, most economical and fastest possible route in close cooperation with the costumer.

To request weather routeing by DMI, please go to: weatherrouteing.dk/request

The Navigator+ Weather package contains:

ICE

Which provides all details of sea ice limits in both the northern and southern hemispheres.

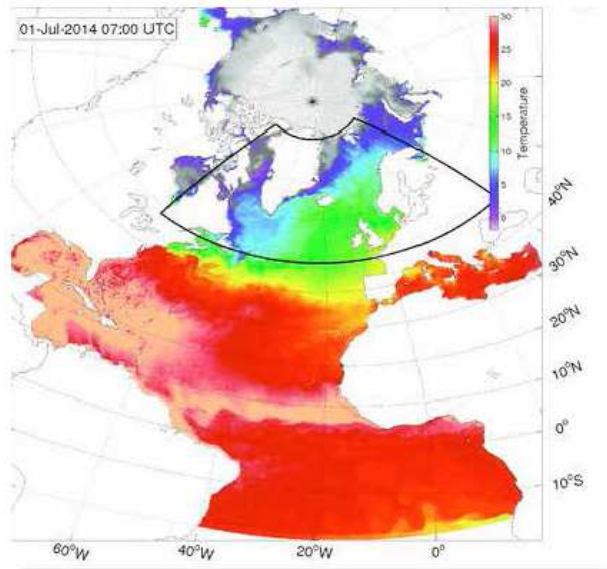
It also provides information about the icebergs near Newfoundland.

All daily reports on icebergs near Newfoundland are supported by and delivered from the Canadian Ice Service by DMI.

Furthermore the southern and northern limits of sea ice are updated daily, based on recent satellite images.

These data are for guidance purposes and are not recommended as a stand-alone product in connection with ice passages.

It is therefore recommended to request DMI for ice guidance and weather routing.



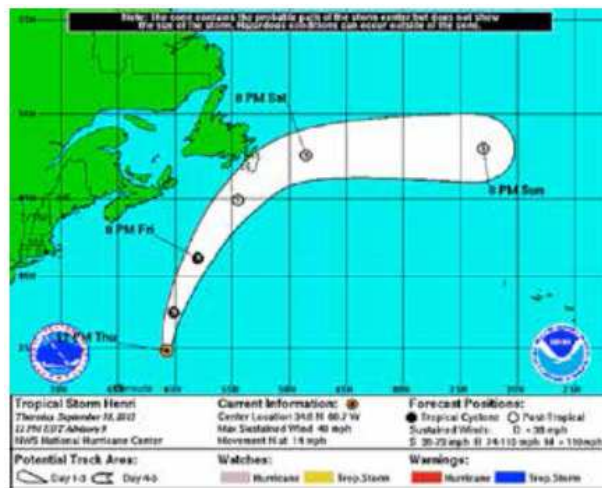
TROPICAL CYCLONES

Together with DMI, the National Hurricane Center and the Joint Typhoon Warning Center, we deliver very detailed information about tropical storms around the world.

Tropical developments are some of the most difficult weather systems when it comes to forecasting.

However, EC MWF, the Joint Typhoon Warning Center and the National Hurricane Center are in the lead when it comes to predicting these weather systems.

Again, due to the uncertainties related to tropical lows, requests to DMI for weather routing are recommended when passing through high-risk areas.



THE ECMWF INTEGRATED FORECASTING SYSTEM CONSISTS OF:

- The Global Atmospheric High Resolution model ECMWF, HRES
- The Ocean General Circulation model, NEMO
- The Ocean Wave model coupled to the atmosphere, WAM HRES

CHART TRACK NAVIGATOR+



Since 1999, Chart Track has been successfully assisting Mariners to sail safely and efficiently.

Minimum System Requirements:

- Windows 7 Service Pack 1 or later
- 4 GB RAM
- 2 GHz CPU
- 10 GB available Hard Disk space

CHART TRACK
YOUR SAFETY IS OUR CONCERN

For more information or to arrange a trial, please contact your chart agent

www.chartrack.com